

RHINOMOTIVE PPF PROCESS CHART

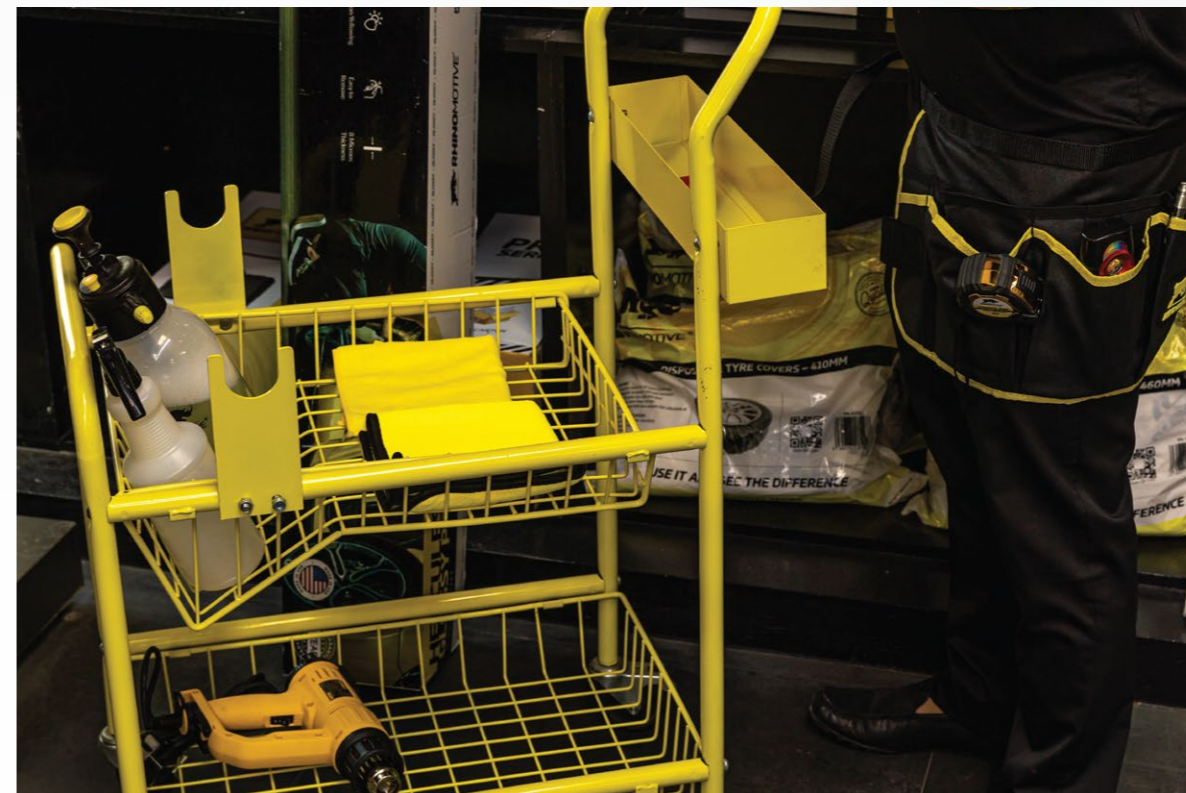
1

- Before Applying Rhinomotive PPF, make sure that the preferred panel is properly paint corrected by doing proper paint polishing/buffing.



2

- R1126 Polish and Detailing Apron or R1152 Shelf Tool Cart to organize all tools and equipment that is needed on the PPF application process.



3

- Take the measurement of the preferred panel by using Rhinomotive R1163 Accurate Meter.



4

- After the measurement was taken. Open the box of the preferred Rhinomotive PPF that will be used on the PPF application process.
- Use R1108 Magnetic Film Cutter or R1161 Heavy Duty Cutter 0.4 MM to cut The Film.
- After taken the required size Rhinomotive PPF, Remove the protected plastic layer from the PPF.



5

- Use R1844 Detailing Pump Spray to apply water on the surface of the preferred panel.



6

- Connect the R1142 Adjustable Pocket Air Pen to any hose connected from the Air compressor or any air supply. Use it to any debris/dust or any contaminants that remains on the panels specially on the tight corners. Use your preferred squeegee to wipe down the excess water from the panel.



7

- Use R1844 Detailing Pump Spray to apply Rhinomotive PPF applicator liquid to the panel.



8

- Remove the thick backing layer of Rhinomotive PPF and use R1844 Detailing Pump Spray to apply PPF applicator liquid on both sides of the PPF surface.



TOOLS / CHEMICALS



R1326
Polish and Detailing Apron



R1108
Magnetic Film Cutter



R1164 / R1165
Heavy Duty Steel Ladder -
2 / 3 Steps



R1161 / R1162
Heavy Duty Cutter
0.4 mm/0.2mm



R1121
Industrial Bottle 1L



R1142
Adjustable Pocket Air Pen



R1152
Shelf Tool Cart



R1163
Accurate Meter



R1141
Hybrid Colour Match and
UV Curing Light



R1325
Waist Tool Organizer



R1820
Reusable Industrial
Trigger Sprayer



R1805
Fluffy Waxing Microfibre



R1844
Detailing Pump Spray



R1016 / R1017
Car Cover



R3534
Door Edge Protector



R1324
Roll up Tool Organizer



R3560
Hercules PPF Bond 3.8 L (1 Gallon)

RHINOMOTIVE PPF PROCESS CHART

9

- Use R1844 Detailing Pump Spray to apply R3560 Hercules PPF Bond on the corners.



10

- Apply Rhinomotive PPF on the preferred panel. Use Squeegee to lock the end corners.



11

- Start from the upper part of the panel going down part of the panel to ensure that the fitting is correct and so you can properly notice if there is any bubbles or contaminants left on between painted panel and the PPF.



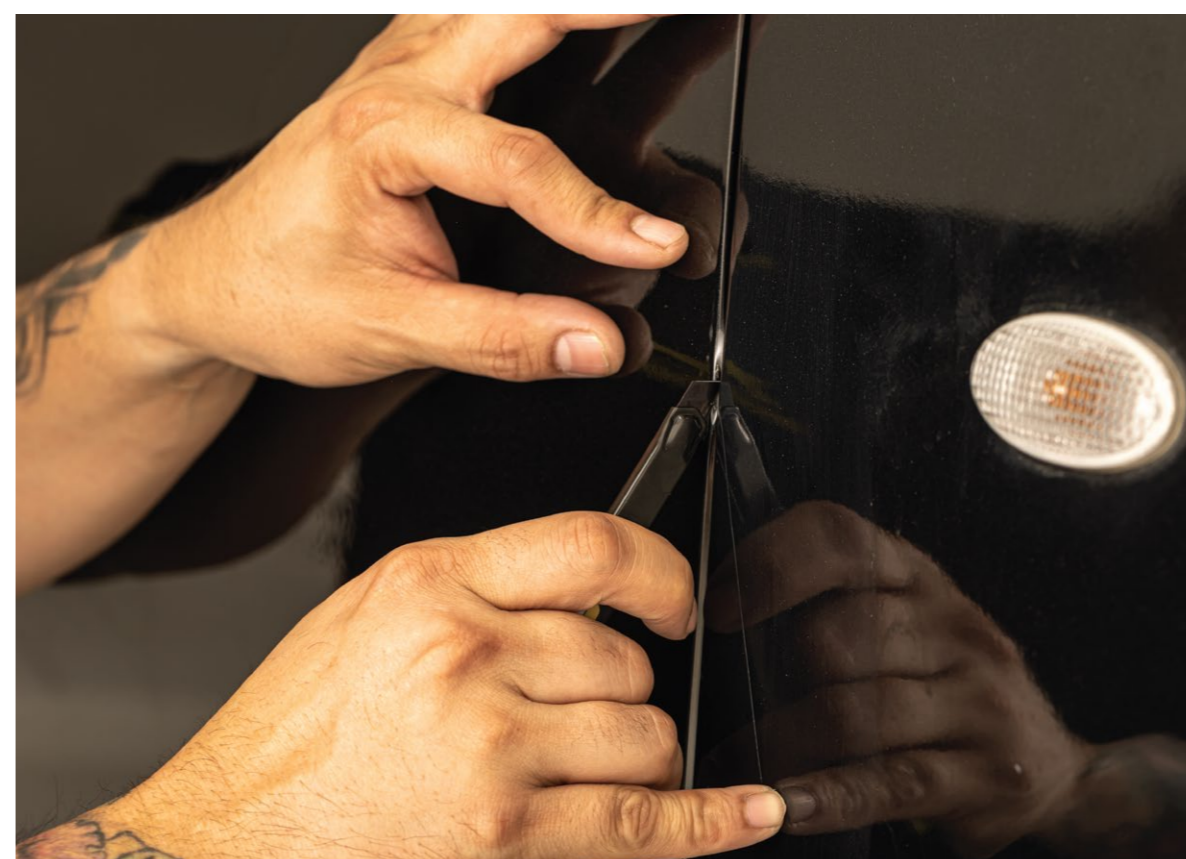
12

- Use R3560 Hercules PPF Bond to properly bond the corners of the PPF.



13

- Use R1162 Heavy Duty Cutter to remove any excess PPF.



14

- Use Heat gun on all edges to secure the bond of the PPF to the panel.



15

- Use R1806 Polish and Final Microfibre Cloth or R1805 Fluffy Waxing Microfibre with the help of R1141 Hybrid and Colour Match and UV Curing Light to check the applied PPF. Remove the excess water or dried alcohol on the surface for finishing to prevent scratches on the PPF surface area.
- OPTIONAL: Use R1164 Heavy duty Steel Ladder - 2 steps or R1165 Heavy duty Steel Ladder - 3 steps in reaching upper areas of the vehicle.
- VALETING: R1016 Disposable Plastic Car Cover Size M or R1017 Disposable Plastic Car Cover Size L for protection from dust and valeting.



TOOLS / CHEMICALS



R3530
Hercules Gloss PPF 60x60



R3531
Hercules Gloss PPF 72x50



R3532
Hercules PPF Matte 60x60



R3535 - R3553
Rhinomotive Color PPF



R1170 / R1171
Heavy Duty Blades - 0.2MM