

## ENGINE FLUSH

1

- Unlatch the bonnet by using the lever inside the vehicle.

2

- Open the bonnet and use the stay to support the bonnet.

3

- Remove the oil filler cap, open R1201 Engine Flush, add engine flush to the engine oil, refit engine oil filler cap.

4

- Start the engine and leave to idle for 10-15 Minutes.

5

- Remove oil filler cap, lift the vehicle to working height, place a container under the sump to contain the old engine oil, remove the sump plug, leave until all the used oil has drained.

6

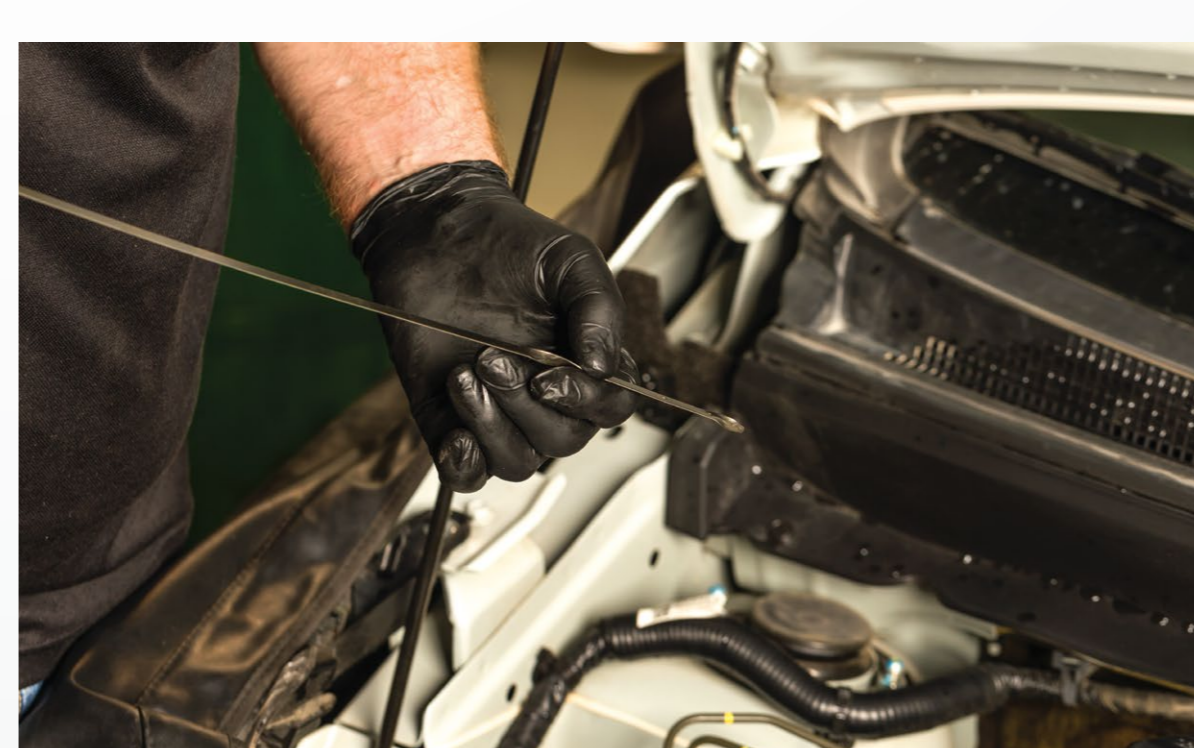
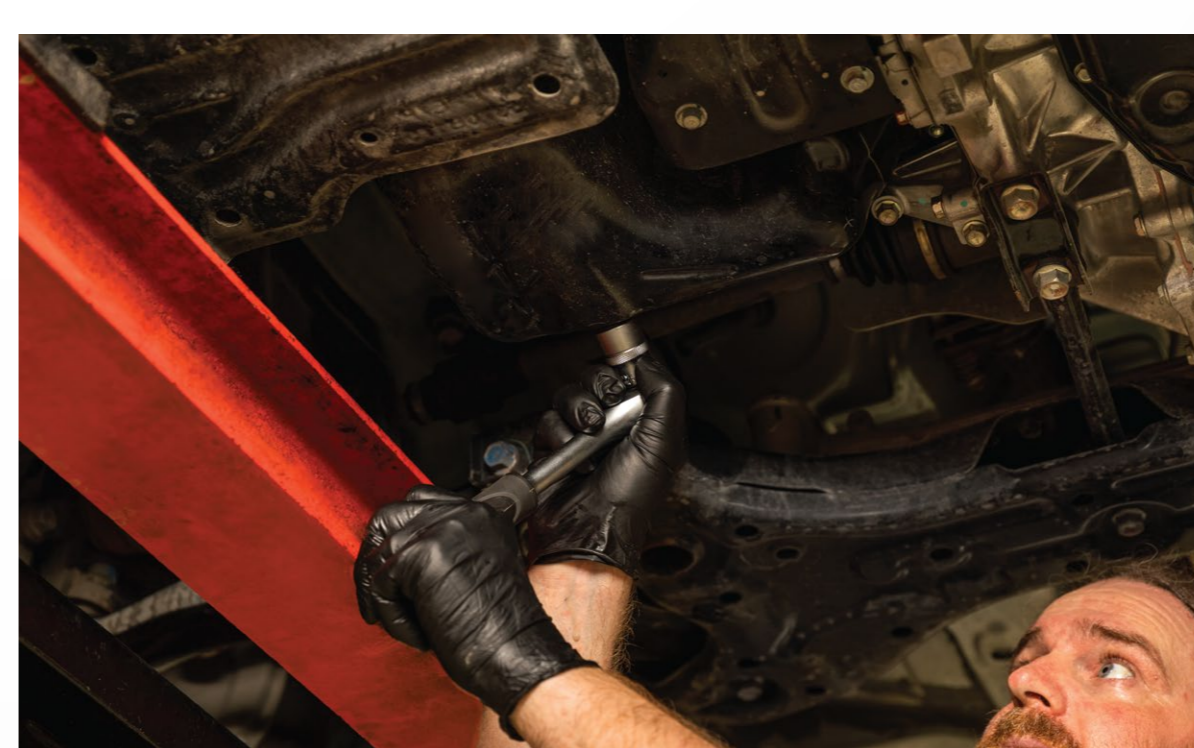
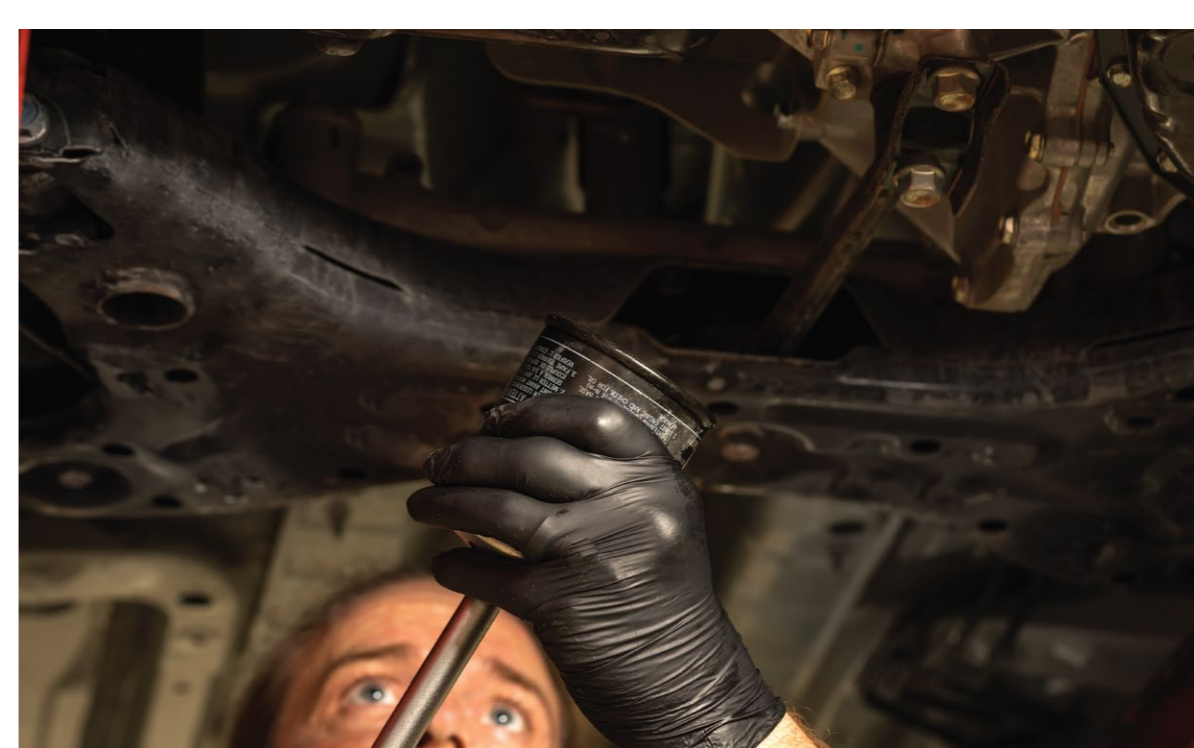
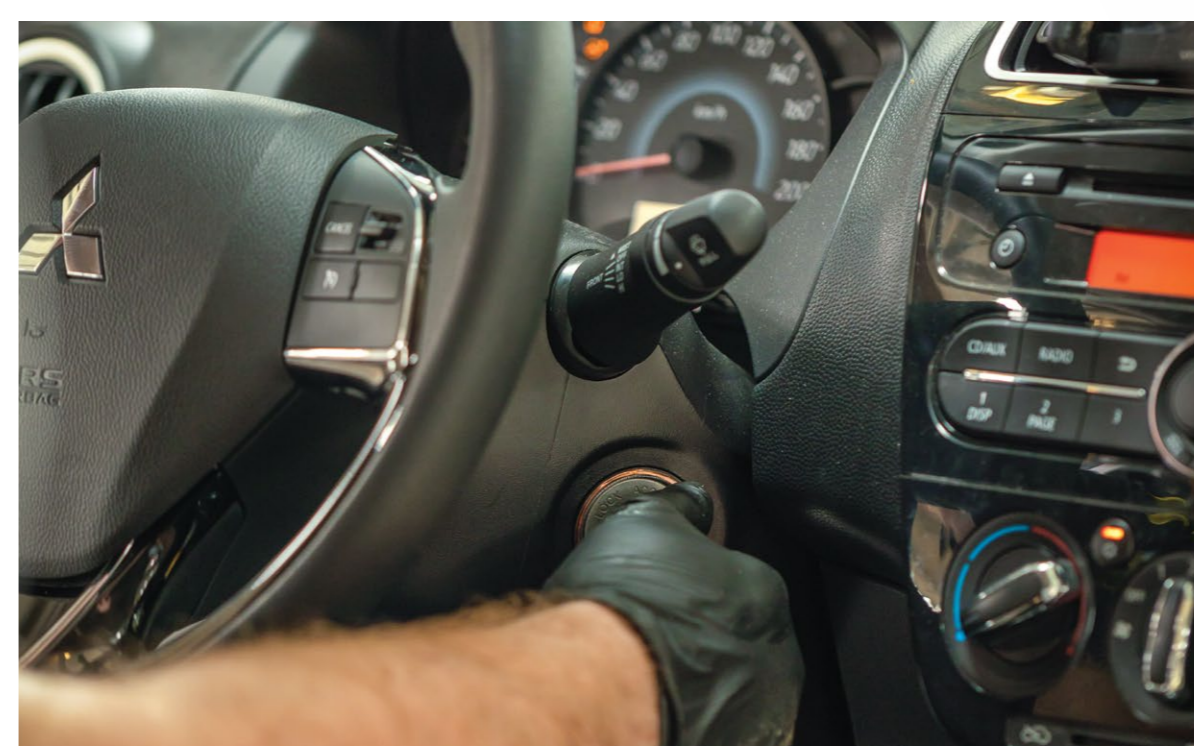
- Remove the old oil filter and replace with new filter.

7

- Replace the washer on the sump plug, refit sump plug as per OEM Specification.

8

- Lower the vehicle, fill the engine oil to just below the correct indicator line, add oil booster, refit the oil filler cap. Start the engine, run for 1-2 minutes. Switch off the engine. Leave to stand for 1 to 2 minutes then recheck the engine oil level, top up if required.



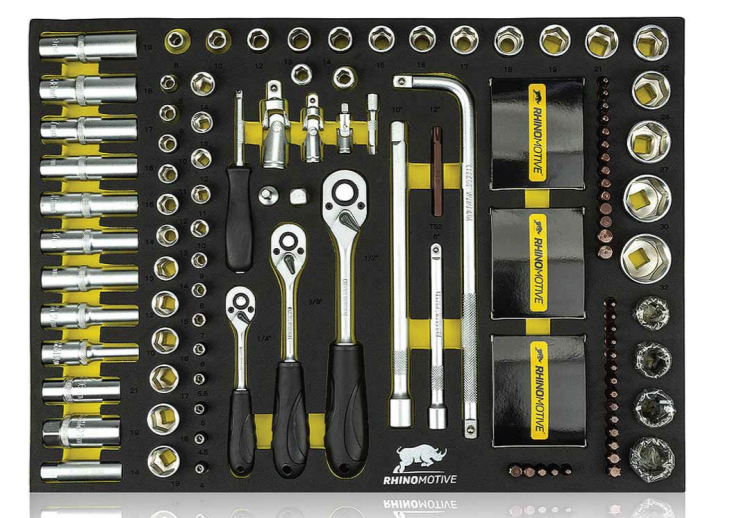
### TOOLS / CHEMICALS



R1201  
Engine Flush



R1179  
Tools Trolley



R3125  
Socket Tool Set - 131 PCS



R3126  
Combination Spanner Tool Set - 36 PCS



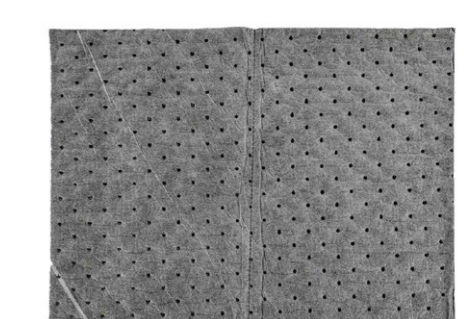
R3128  
Auto Tools Set - 45 PCS



R1229  
Oil Absorbing wipes



Nitrile Gloves



R1228  
Absorbent Pads



R1225  
Hand Cleaning Paste

**TIME: 30MINS**